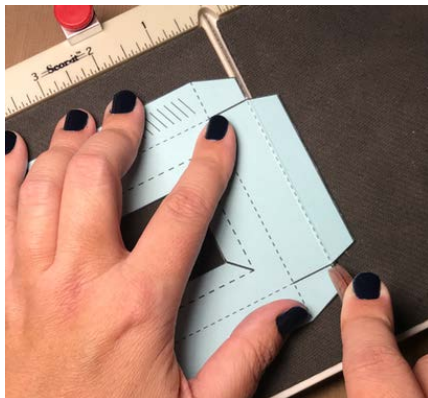
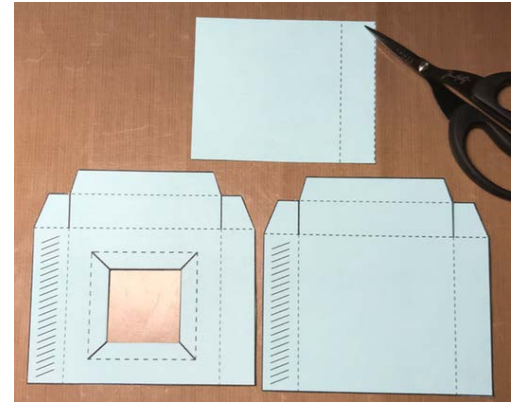


Square Box Template

Stamps and Dies:	Cardstock:	Other Supplies:
<ul style="list-style-type: none"> • AGC4-2872 Square Box Template Cling Stamp or • 11481MC Rudolph and Reindeer Treats Clear Stamps • 11002SC Teardrop Ornament Clear Stamp Set (snowflakes for background) 	<ul style="list-style-type: none"> • Light Blue 	<ul style="list-style-type: none"> • Ink Pads in Various Blue Hues • Colored Pencils or Markers • Acetate (for window) • Double-sided tape • Foam mounting tape • Choice of box contents (Cinnamon candies, cherry sours, etc)

- Stamp the Square Box Template stamp three times on heavy cardstock as shown in photo at left: (1) one complete image, (2) a second image *without* the inside portion, and (3) a third image *without* the inside portion AND with the outer parts also cut off. (For the third image, which makes the cover flap, note that you will need to cut on the dotted/dashed lines along the top and right sides.)



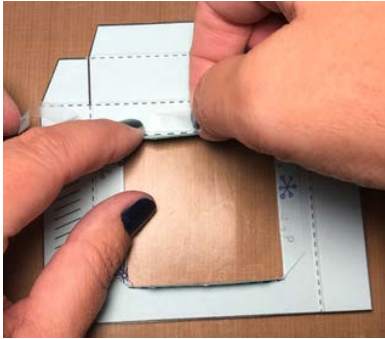
- Cut on all solid lines. Score and pre-fold on all dotted/dashed lines.

- Stamp desired background or images on all three pieces of square box.

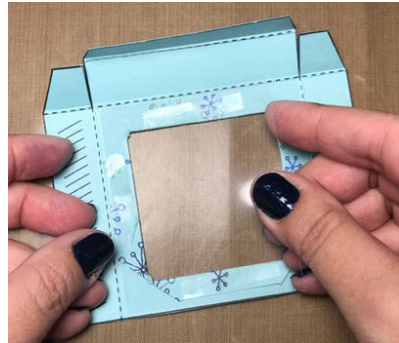


Inky Antics

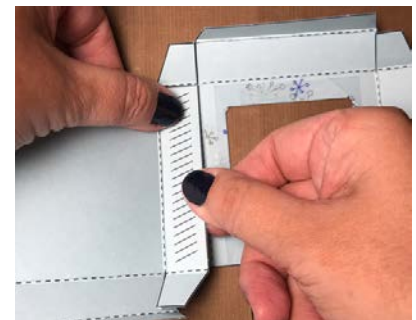
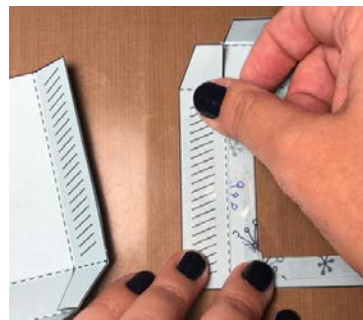
Rubber Stamps



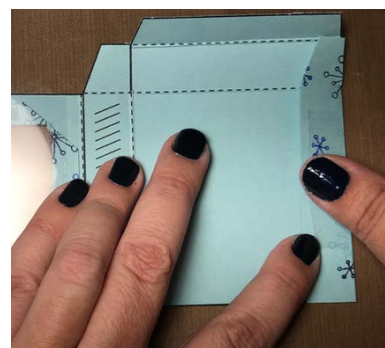
4. To make the window, cut on solid lines and score on dotted/dashed lines in the center section of the stamped complete image. Place double-sided tape on the underside of tabs and press down to adhere. (This allows the window to have folded edges for a more finished appearance.) Place double-sided tape on top of all four tabs, and put window acetate on top. Press to adhere and seal the window closed.



5. Position the window piece on your work surface so that the top flap of the box piece is pointing away from you. Put double-sided tape onto the SHADED side flap of the box piece. With the stamped side facing UP, position the other box piece (solid piece), so that the top flap is pointing toward you, and lay one SHADED side flap on top of the other. Fasten the side flaps of both pieces together, pressing down to adhere the tape.



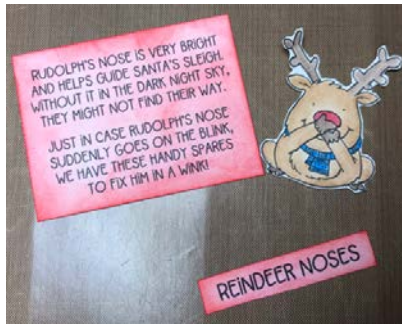
6. Place double-sided tape on opposite flap (unshaded), fold the top piece over (to close up the box), and fasten the flaps on the opposite side of the box.



Inky Antics

Rubber Stamps

7. Close the top and bottom flaps (lids) of the box.



8. Stamp and color images for cover flap. Place on inside and outside of cover flap as shown, or as desired.

9. To add the cover flap, place double-sided tape on the SHADED area and attach to the left side of the box.



10. Completed box with treats inside.

